

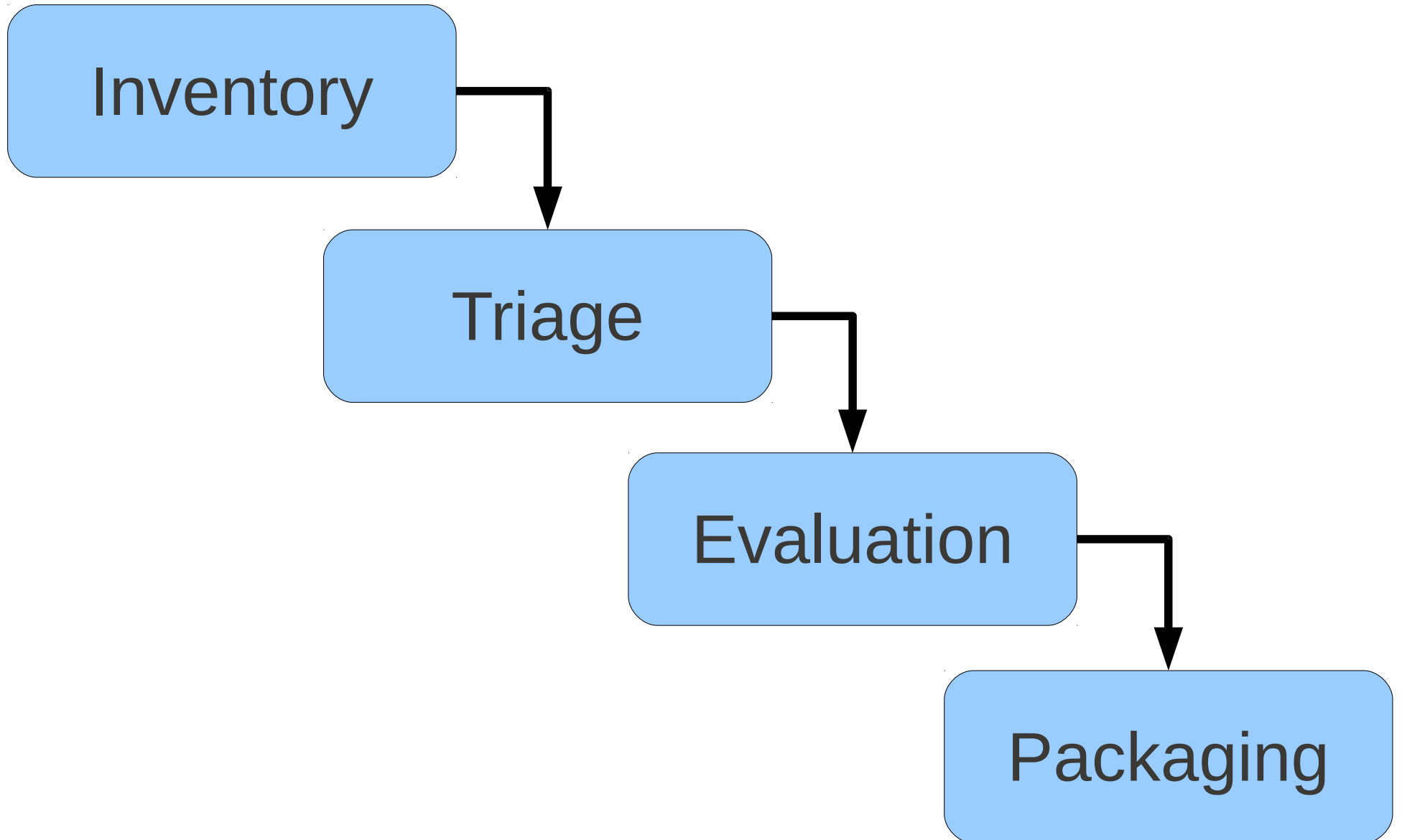
ITKv4 Modularization

December - 2010

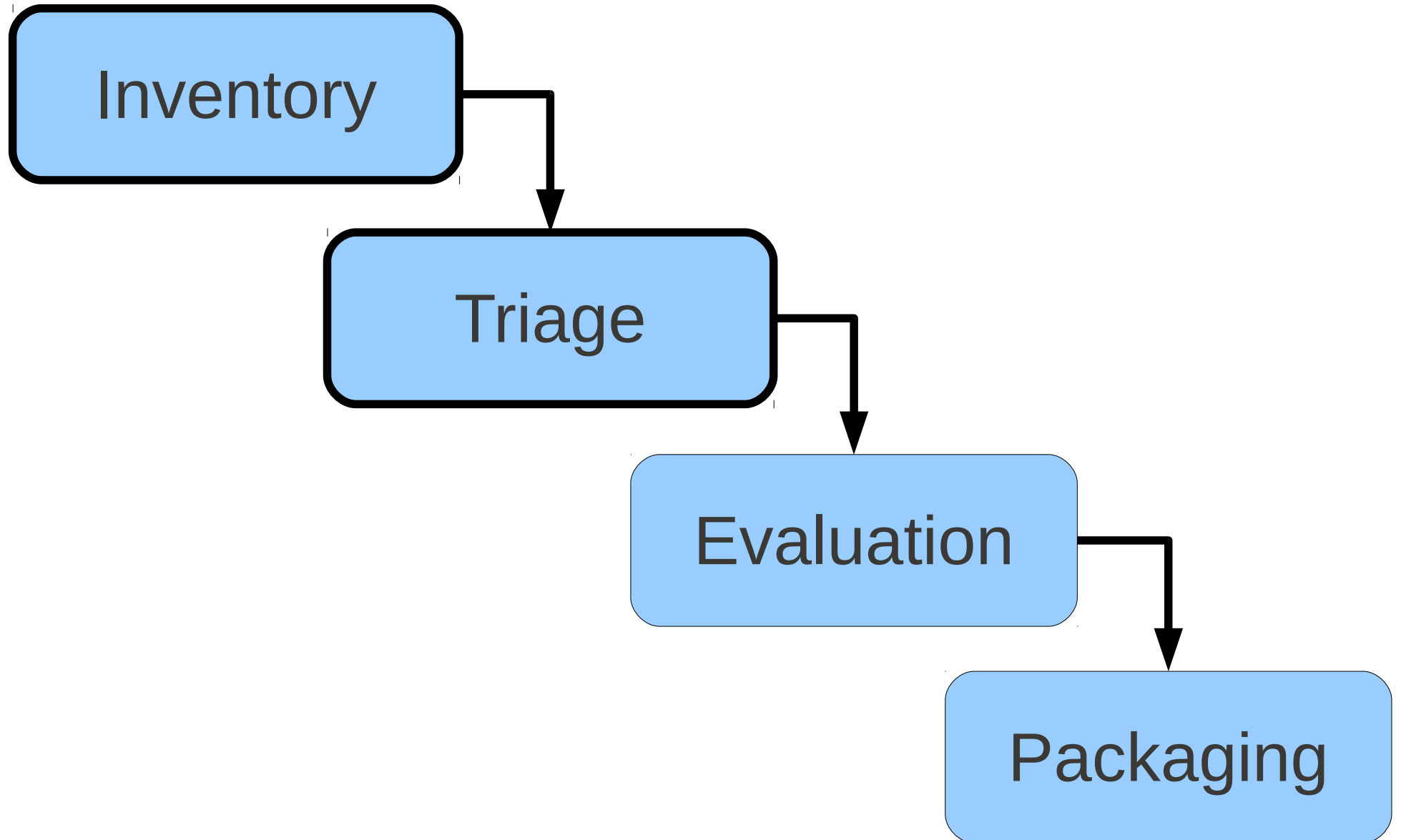
Modularization Goals

- Growth Management
- Software Quality Improvement
- Facilitating Add-Ons
- Separate Third Party Libraries
- Optional Components

Road-map Phases



Road-map Phases



Inventory

- **2331** Files (.h, .txx, .cxx)
 - 802 Common
 - 335 BasicFilters
 - 339 Algorithms
 - 374 Numerics
 - 153 IO
 - 110 SpatialObjects
 - 378 Review

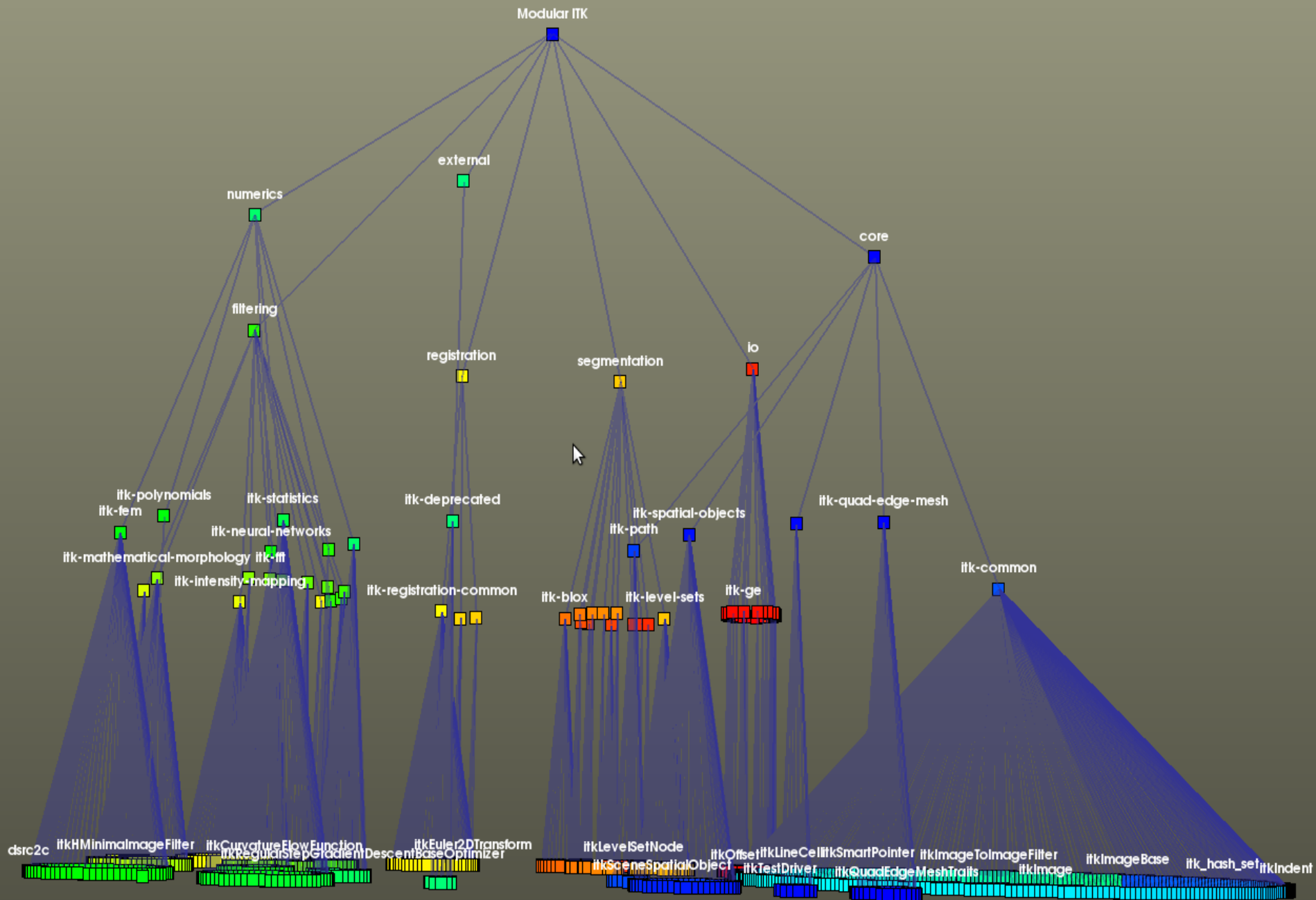
Triage

- Fine Granularity
- Skeleton Hunting...

Triage

Major Groups

- Core
- Filtering
- Io
- Numerics
- Registration
- Segmentation
- External
- Bridge



Core

- itk-common
- itk-io-common
- itk-path
- itk-quad-edge-mesh
- itk-spatial-objects

Filtering (1)

- itk-anisotropic-smoothing
- itk-anti-alias
- itk-bias-correction
- itk-distance-map
- itk-edge-detection
- itk-fft

Filtering (2)

- itk-gradient
- itk-image-statistics
- itk-intensity-mapping
- itk-mathematical-morphology
- itk-quad-edge-mesh-filtering
- itk-resampling
- itk-thresholding

IO

- itk-analyze
- itk-biorad
- itk-bmp
- itk-gdcm
- itk-ge
- itk-gipl
- itk-io-deprecated
- itk-io-mesh
- itk-io-spatialobjects
- itk-io-transform
- itk-io-vtk
- itk-ipl
- itk-jpeg
- itk-lsm
- itk-meta
- itk-nifti
- itk-nrrd
- itk-png
- itk-siemens
- itk-stimulate
- itk-tiff
- itk-xml

Numerics

- itk-eigen
- itk-fem
- itk-neural-networks
- itk-optimizers
- itk-polynomials
- itk-statistics

Segmentation (1)

- itk-bio-cell
- itk-blox
- itk-classifiers
- itk-connected-components
- itk-deformable-mesh
- itk-label-voting

Segmentation (2)

- itk-level-sets
- itk-markov-random-fields-classifiers
- itk-region-growing
- itk-region-growing-klm
- itk-voronoi
- itk-watersheds

Registration

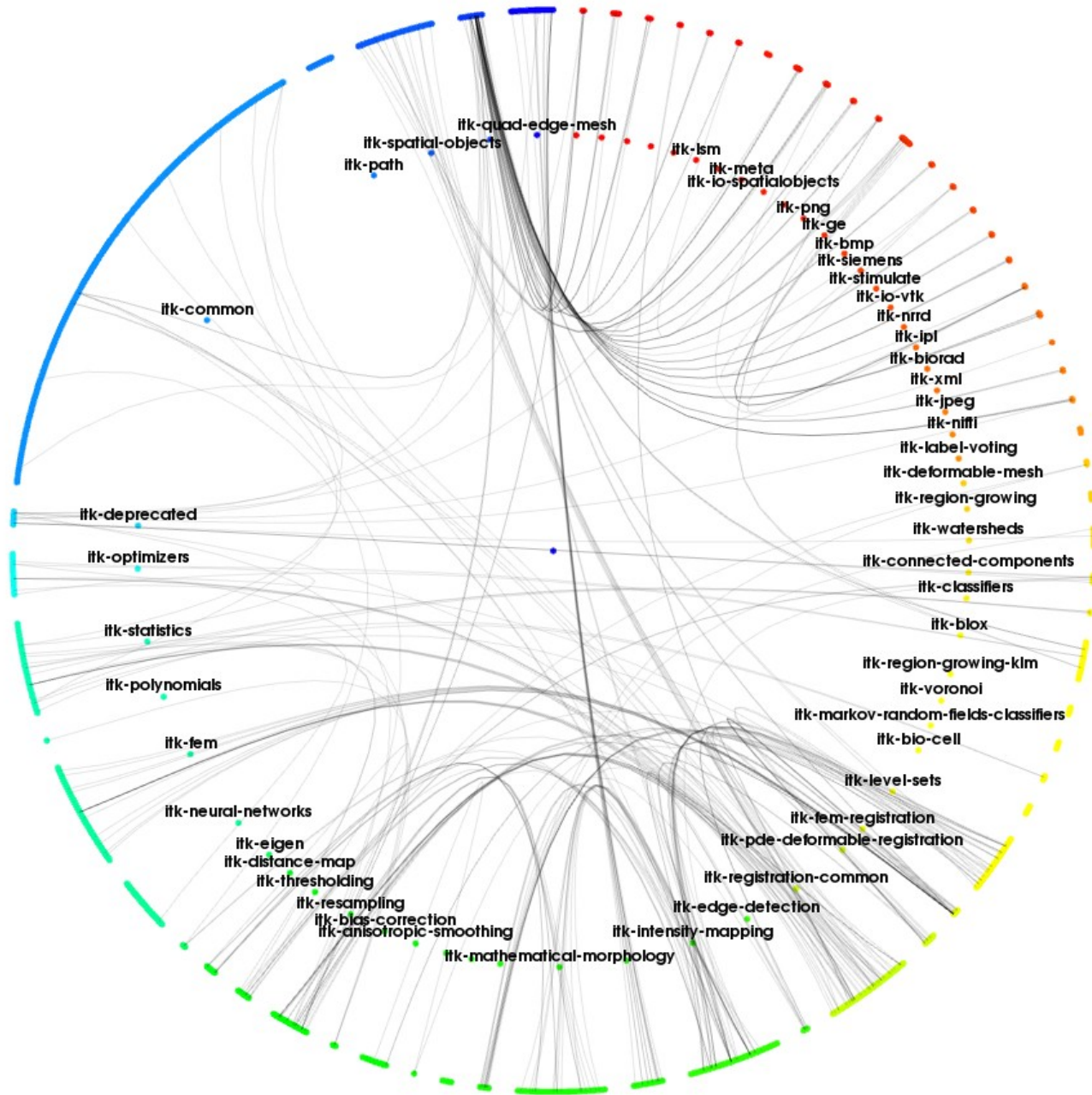
- itk-fem-registration
- itk-pde-deformable-registration
- itk-registration-common

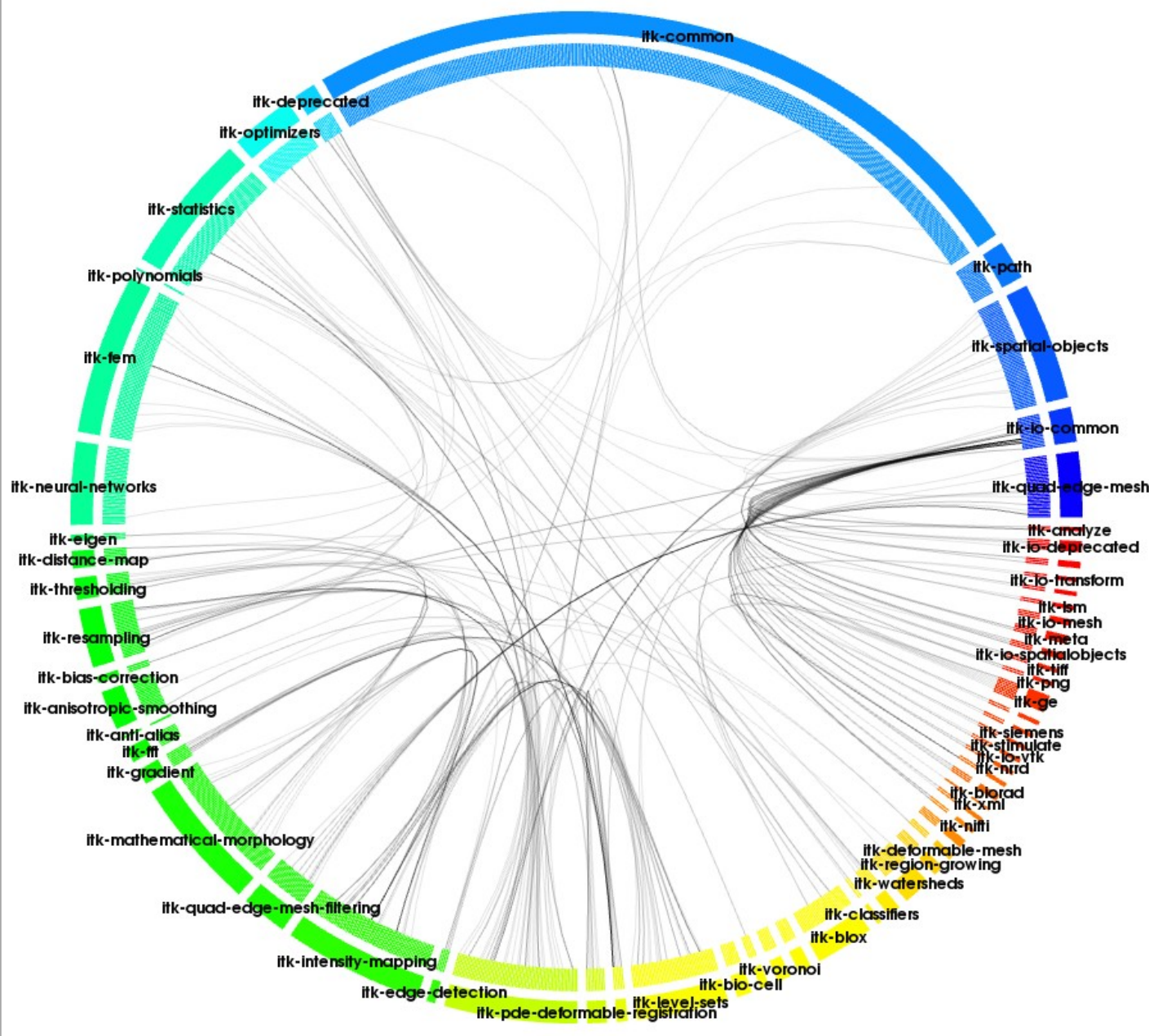
Bridge

- itk-vtk
- itk-fltk
- itk-qt
- itk-opencv

External

- itk-deprecated





Dependency Cleaning

- Identify bogus `#includes`
- Segregate modules

Quality Labeling

- Code Coverage per module
- Valgrind reports per module
- Labeling modules

End